

Accessory/Kit



# **40" Mow-N-Go Trailer**

## **28-000-A**

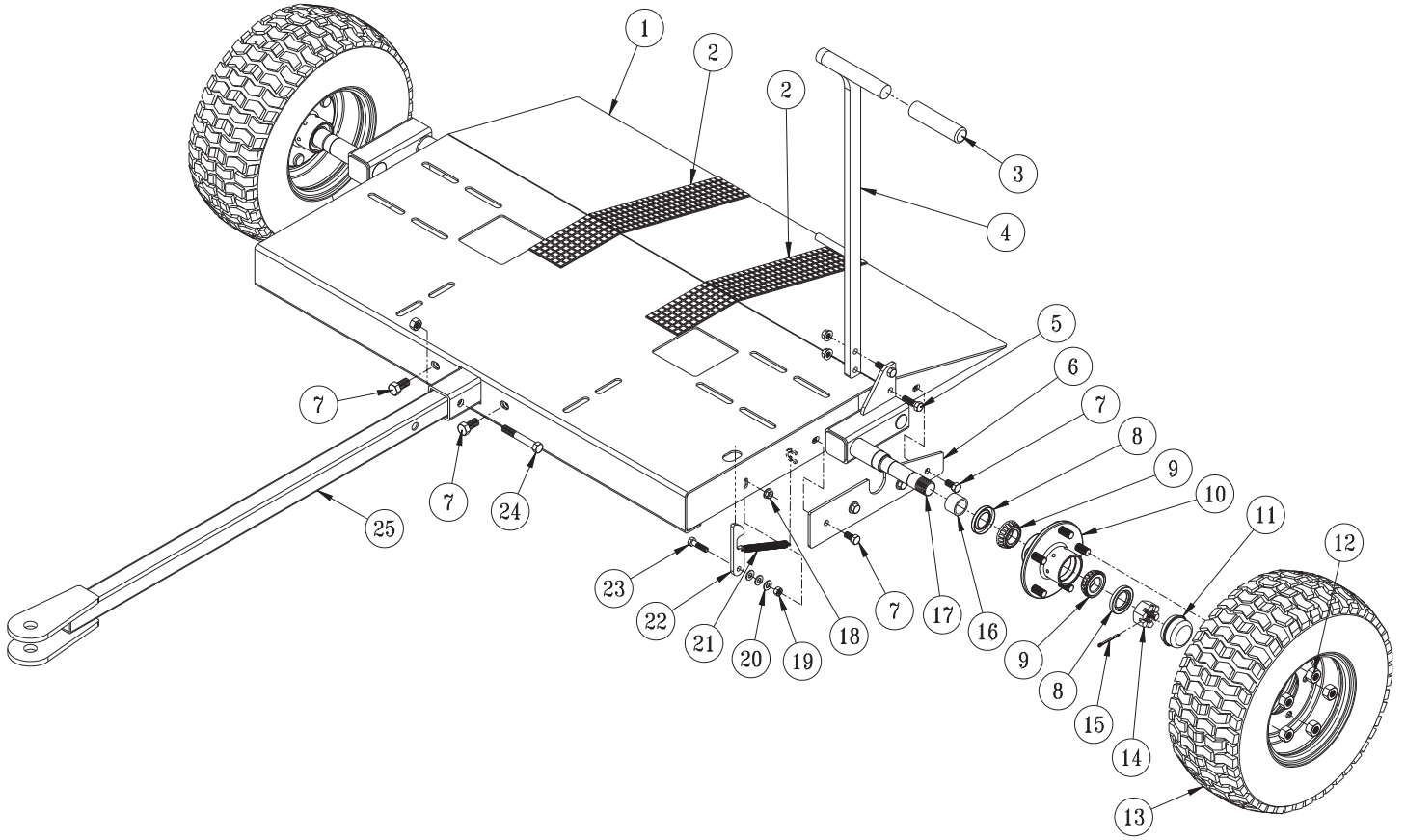
**August 2023**

***Product Support:***

***Hwy 55 & Poplar Ave; Cameron WI 54822***

***1-800-891-9435    [productsupport@smithco.com](mailto:productsupport@smithco.com)***

# 28-000 MOW-N-GO TRAILER DRAWING



## 28-000 MOW-N-GO TRAILER PARTS LIST

REF#	PART#	DESCRIPTION	QUANTITY
1	28-010	Trailer, 40"	1
2	28-027	Rubber Matting	2
3	15-019	Hand Grip	1
4	28-012	Handle	1
5	HB-38-16-125	Hex Bolt, $\frac{3}{8}$ - 16 x $1\frac{1}{4}$	2
	HNFL-38-16	Flange Lock Nut, $\frac{3}{8}$ - 16	2
6	28-025	Axle Mount Plate	2
7	HB-38-16-100	Hex Bolt, $\frac{3}{8}$ - 16 x 1	12
	HNFL-38-16	Flange Lock Nut, $\frac{3}{8}$ - 16	12
8	11-041*	Oil Seal	4
9	11-043*	Bearing	4
10	80-019	Hub (includes * items)	2
	27-022-02*	Stud, $\frac{1}{2}$ - 20 x $1\frac{7}{16}$	10
11	33-073-02*	Dust Cap	2
12	HNL-12-20*	Lug Nut, $\frac{1}{2}$ - 20	10
13	28-026	Tire & Wheel	2
	28-026-01	Tire, 16 x 6.50-8	2
	28-026-02	Wheel, 8 x 5.375	2
14	HNAR-100-14	Slotted Jam Nut, 1-14	2
15	HP-18-150	Cotter Pin, $\frac{1}{8}$ x $1\frac{1}{2}$	2
16	28-015	Hub Spacer	2
17	28-024	Axle, 40"	1
18	HNFL-516-18	Flange Lock Nut, $\frac{5}{16}$ - 18	1
19	HN-516-18	Hex Nut, $\frac{5}{16}$ - 18	1
20	HW-516	Flat Washer, $\frac{5}{16}$	3
21	16-046	Extension Spring	1
22	28-013	Latch	1
23	HB-516-18-125	Hex Bolt, $\frac{5}{16}$ - 18 x $1\frac{1}{4}$	1
24	HB-716-14-300	Hex Bolt, $\frac{7}{16}$ - 14 x 3	1
	HN-716-14	Hex Nut, $\frac{7}{16}$ - 14	1
25	28-011	Tongue	1



# 28-000 MOW-N-GO TRAILER DRAWING

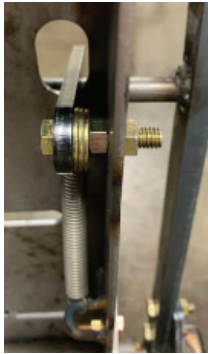
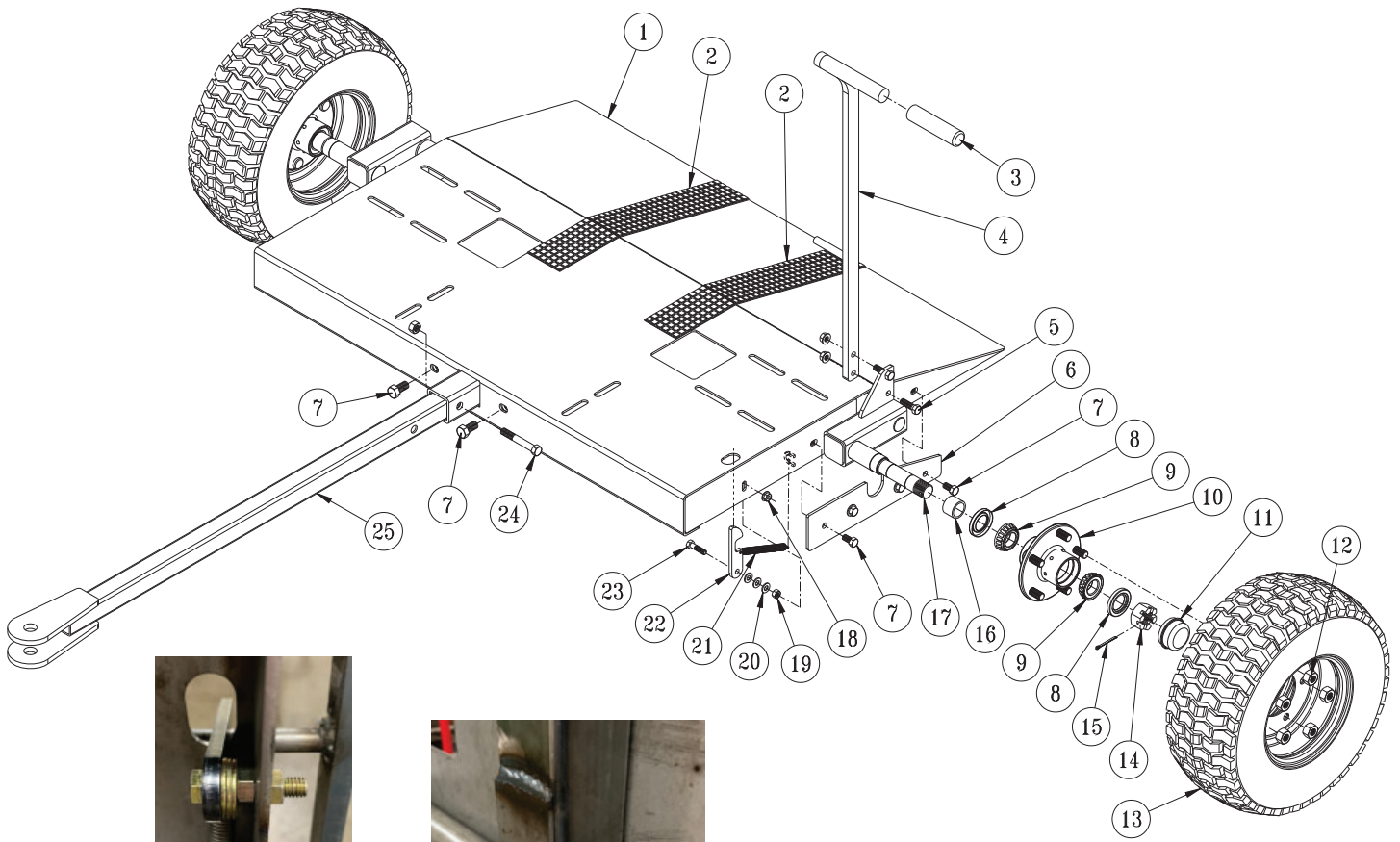
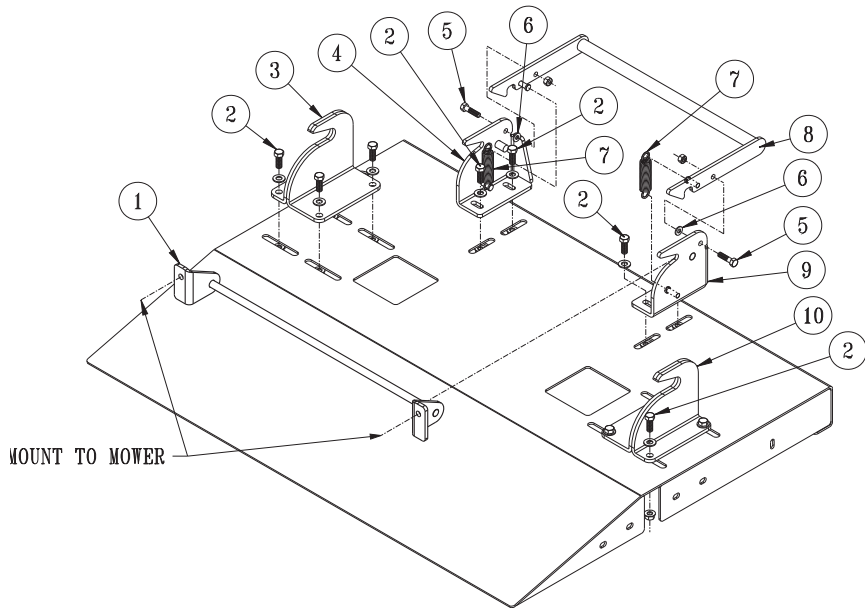


Fig. B



Fig. A

# MOUNTING KITS DRAWING



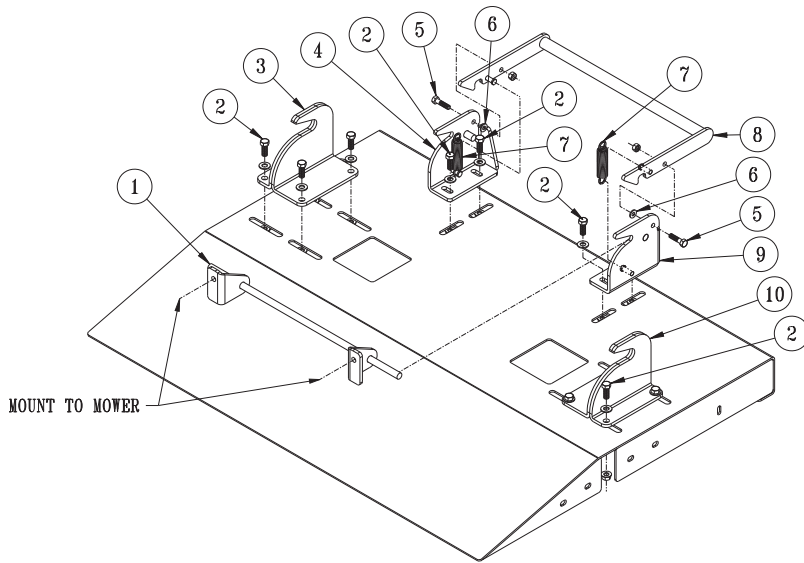
## TRAILER ASSEMBLY INSTRUCTIONS

1. Position trailer bed top down on your work surface.
2. Slide the tongue tube part of the Axle [Ref. 17] through the square hole in the Bed [Ref. 1], making sure to position the Axle with the tube support exposed **[Fig. A]**. Secure to the Bed using (2)  $\frac{3}{8}$  x 1 Hex Bolts and  $\frac{3}{8}$  Flange Lock Nuts [Ref. 7]. Tighten hardware.
3. Attach an Axle Mount Plate [Ref.6] to each side of the Bed using (4)  $\frac{3}{8}$  x 1 Hex Bolts and  $\frac{3}{8}$  Flange Lock Nuts per plate. Tighten hardware.
4. Turn the Bed/Axle assembly over.
5. Slide one Hub Spacer [Ref. 16] on a spindle shaft, then install a Hub [Ref. 10] onto that spindle shaft. Secure using one Axle Nut [Ref. 14] and one Cotter Pin [Ref. 15]. Install Dust Cap [Ref. 11]. Thread Studs into Hub.
6. Repeat for other spindle shaft.
7. Mount Handle [Ref. 4] to the triangle bracket on the Axle using (2)  $\frac{3}{8}$  x 1 Hex Bolt and  $\frac{3}{8}$  Flange Lock Nuts. Position Handle on the Bed side of the bracket. Slide on the Rubber Grip [Ref. 3].
8. Install Latch [Ref. 22] by inserting  $\frac{5}{16}$  x  $1\frac{1}{4}$  bolt through Latch. Slide (3)  $\frac{5}{16}$  Flat Washers [Ref. 20] onto the bolt then install the  $\frac{5}{16}$  Hex Nut [Ref. 19], tighten so the Latch rotates freely but not sliding on the bolt. Insert Latch/Bolt assembly through the slot, secure using the  $\frac{5}{16}$  Flange Lock Nut [Ref. 18]. Install the Extension Spring [Ref. 21]. Hook one end in the small hole on the Latch and the other end on the loop under the trailer deck. **[Fig. B]**
9. Adjustment of the Latch may be done by sliding it up or down in the slot according to where the handle is located.
10. Install Tire & Wheel [Ref. 13] using the Lugnuts [Ref.12]. There are (5) per Tire & Wheel
11. Installation of the Tongue uses the  $\frac{7}{16}$  x 3 Hex Bolt and  $\frac{7}{16}$  Hex Nut [Ref. 24]. Adjust to your need using the three holes in the tongue tube.

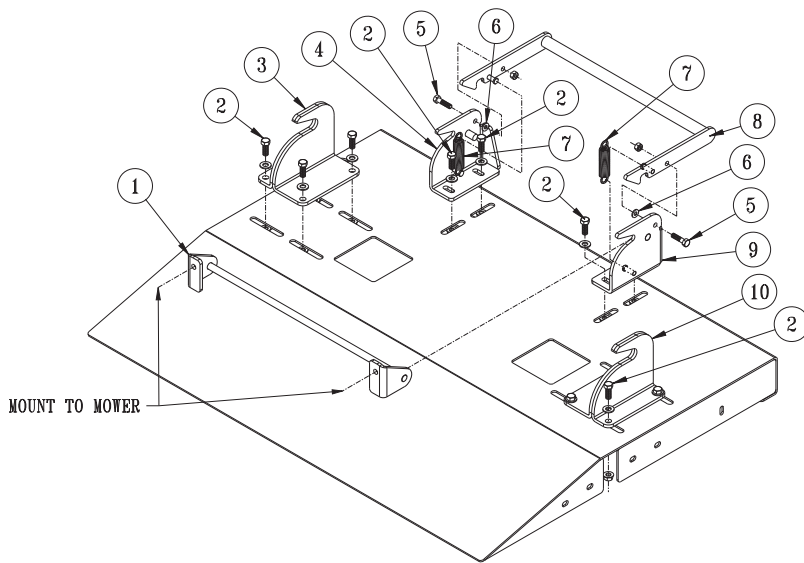
## MOUNTING KIT ASSEMBLY INSTRUCTIONS

1. Install the RH [Ref. 10] and LH [Ref. 3] Axle Stops using (4)  $\frac{3}{8}$  x 1 Hex Bolt,  $\frac{3}{8}$  Flat Washers and  $\frac{3}{8}$  Flange Lock Nuts per Stop. The "short" flange on the Axle Stop will orient to the outside of the trailer, as illustrated.
2. Install the RH [Ref. 9] and LH [Ref.4] Latch Brackets using (2)  $\frac{3}{8}$  x 1 Hex Bolt,  $\frac{3}{8}$  Flat Washers and  $\frac{3}{8}$  Flange Lock Nuts per Bracket. Do not tighten yet, leave Brackets loose until installing the Foot Lever.
3. Insert (1)  $\frac{5}{16}$  x  $1\frac{1}{4}$  Hex Bolt [Ref. 5] through the hole in the LH Latch Bracket. Slide (1)  $\frac{1}{4}$  Flat Washer over the bolt. Insert into the hole on the Foot Lever [Ref. 8] and secure using (1)  $\frac{5}{16}$  Nylon Lock Nut [Ref. 6]. Repeat for other Bracket.
4. Position Latch Brackets/Foot Lever assembly in the center of the Trailer. Tighten hardware.
5. Install Extension Spring [Ref. 7] by hooking one end to the pin on the Latch Bracket and the other end to the pin on the Foot Lever. Repeat for other side.

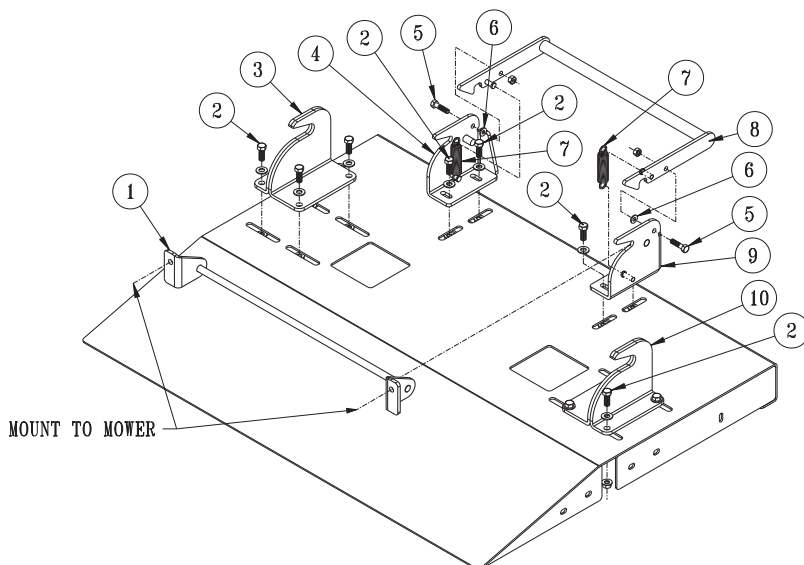
# 28-000 MOUNTING KITS DRAWING



**28-003-K**



**28-004-K**



**28-005-K**



## 28-000 MOUNTING KITS PARTS LIST

### 28-003-K MOUNTING KIT PARTS LIST

REF#	PART#	DESCRIPTION	QUANTITY
1	28-018	Latch Bar	1
2	HB-38-16-100	Hex Bolt, $\frac{3}{8}$ - 16 x 1	12
	HW-38	Flat Washer, $\frac{3}{8}$	12
	HNFL-38-16	Flange Lock Nut, $\frac{3}{8}$ - 16	12
3	28-017	LH Axle Stop	1
4	28-023	LH Latch Bracket	1
5	HB-516-18-125	Hex Bolt, $\frac{5}{16}$ - 18 x 1 $\frac{1}{4}$	2
	HNTL-516-18	Nylon Lock Nut, $\frac{5}{16}$ -18	2
6	HW-14	Flat Washer, $\frac{1}{4}$	2
7	21-212	Extension Spring	2
8	28-021	Foot Lever	1
9	28-022	RH Latch Bracket	1
10	28-016	RH Axle Stop	1

### 28-004-K MOUNTING KIT PARTS LIST

REF#	PART#	DESCRIPTION	QUANTITY
1	28-019	Latch Bar	1
2	HB-38-16-100	Hex Bolt, $\frac{3}{8}$ - 16 x 1	12
	HW-38	Flat Washer, $\frac{3}{8}$	12
	HNFL-38-16	Flange Lock Nut, $\frac{3}{8}$ - 16	12
3	28-017	LH Axle Stop	1
4	28-023	LH Latch Bracket	1
5	HB-516-18-125	Hex Bolt, $\frac{5}{16}$ - 18 x 1 $\frac{1}{4}$	2
	HNTL-516-18	Nylon Lock Nut, $\frac{5}{16}$ -18	2
6	HW-14	Flat Washer, $\frac{1}{4}$	2
7	21-212	Extension Spring	2
8	28-021	Foot Lever	1
9	28-022	RH Latch Bracket	1
10	28-016	RH Axle Stop	1

### 28-005-K MOUNTING KIT PARTS LIST

REF#	PART#	DESCRIPTION	QUANTITY
1	28-020	Latch Bar	1
2	HB-38-16-100	Hex Bolt, $\frac{3}{8}$ - 16 x 1	12
	HW-38	Flat Washer, $\frac{3}{8}$	12
	HNFL-38-16	Flange Lock Nut, $\frac{3}{8}$ - 16	12
3	28-017	LH Axle Stop	1
4	28-023	LH Latch Bracket	1
5	HB-516-18-125	Hex Bolt, $\frac{5}{16}$ - 18 x 1 $\frac{1}{4}$	2
	HNTL-516-18	Nylon Lock Nut, $\frac{5}{16}$ -18	2
6	HW-14	Flat Washer, $\frac{1}{4}$	2
7	21-212	Extension Spring	2
8	28-021	Foot Lever	1
9	28-022	RH Latch Bracket	1
10	28-016	RH Axle Stop	1



## 28-000-A PACKING LIST

<u>PART#</u>	<u>DESCRIPTION</u>	<u>QUANTITY</u>
28-010 .....	TRAILER BED, 40" .....	1
28-011 .....	TONGUE.....	1
28-012 .....	HANDLE .....	1
28-013 .....	LATCH.....	1
28-015 .....	HUB SPACER.....	2
28-024 .....	AXLE.....	1
28-025 .....	AXLE MOUNT PLATE.....	2
28-026 .....	TIRE & WHEEL .....	2
80-019 .....	HUB ASSEMBLY.....	2

## SMALL PARTS BAG

<u>PART#</u>	<u>DESCRIPTION</u>	<u>QUANTITY</u>
15-019 .....	HAND GRIP .....	1
16-046 .....	EXTENSION SPRING .....	1
HB-38-16-100 .....	HEX BOLT, $\frac{3}{8}$ - 16 X 1 .....	12
HB-38-16-125 .....	HEX BOLT, $\frac{3}{8}$ - 16 X $1\frac{1}{4}$ .....	2
HB-516-18-125 .....	HEX BOLT, $\frac{5}{16}$ - 18 X $1\frac{1}{4}$ .....	1
HB-716-14-300 .....	HEX BOLT, $\frac{7}{16}$ - 14 X 3.....	1
HNFL-38-16.....	FLANGE LOCK NUT, $\frac{3}{8}$ - 16 .....	14
HNFL-516-18.....	FLANGE LOCK NUT, $\frac{5}{16}$ - 18.....	1
HN-516-18 .....	HEX NUT, $\frac{5}{16}$ - 18 .....	1
HN-716-14 .....	HEX NUT, $\frac{7}{16}$ - 14 .....	1
HNAR-100-14 .....	SLOTTED JAM NUT, 1 - 14.....	2
HP-18-150 .....	COTTER PIN, $\frac{1}{8}$ X $1\frac{1}{2}$ .....	2
HW-516 .....	FLAT WASHER, $\frac{5}{16}$ .....	3