



*Parts Manual*

# TOURNAMENT ULTRA XXL GREENS ROLLER 70”

**7000**  
SN: T9536

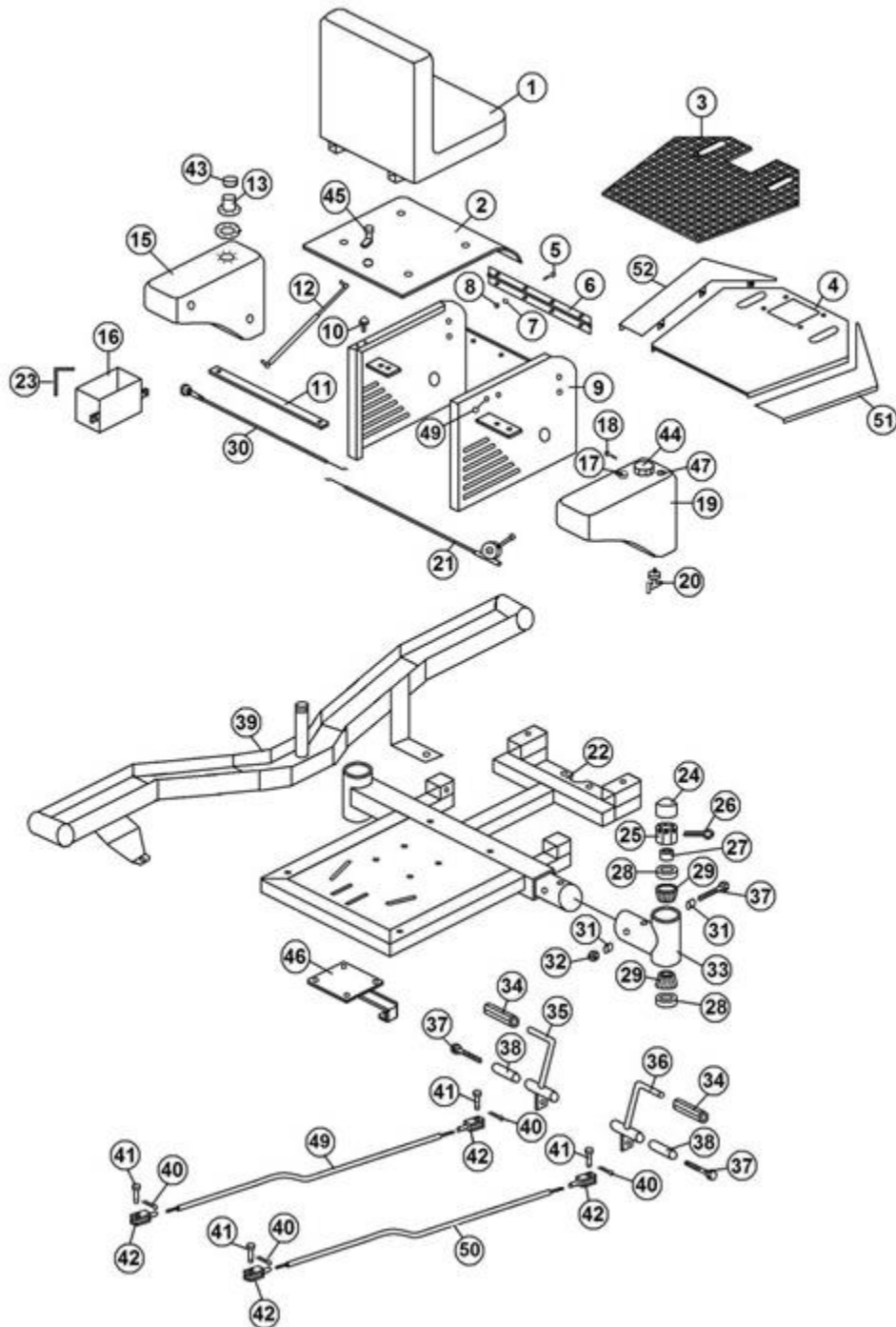
Revised September, 2023

Product Support: 1020 Hawaii Rd; Humboldt, KS 66748  
1-888-422-5173 [wj@smithco.com](mailto:wj@smithco.com)

# **TABLE OF CONTENTS**

<b>TITLE</b>	<b>PAGE</b>
Frame Drawing	1
Frame Parts List	2-3
Roller Housing Drawing	4
Roller Housing Parts List	5
Steering Drawing	6
Steering Parts List	7
Wiring Drawing & Parts List	8
Engine Drawing & Parts List	9
Wheel Motor Drawing	10
Wheel Motor Parts List	11
Hydraulic Plumbing Drawing	12
Hydraulic Plumbing Parts List	13
750-846 Pump Drawing	14
750-846 Pump Parts List	15
Pump Linkage Drawing & Parts List	16
Performance Chart	17-18
750-450 Light Kit Parts List & Installation	19-20
7516 Brush Kit Parts List & Installation	21-25
7525 Trailer Drawing	26
7525 Trailer Parts List	27
Trailer Springs	28
SMITHCO Warranty	29-30

# 7000 FRAME DRAWING



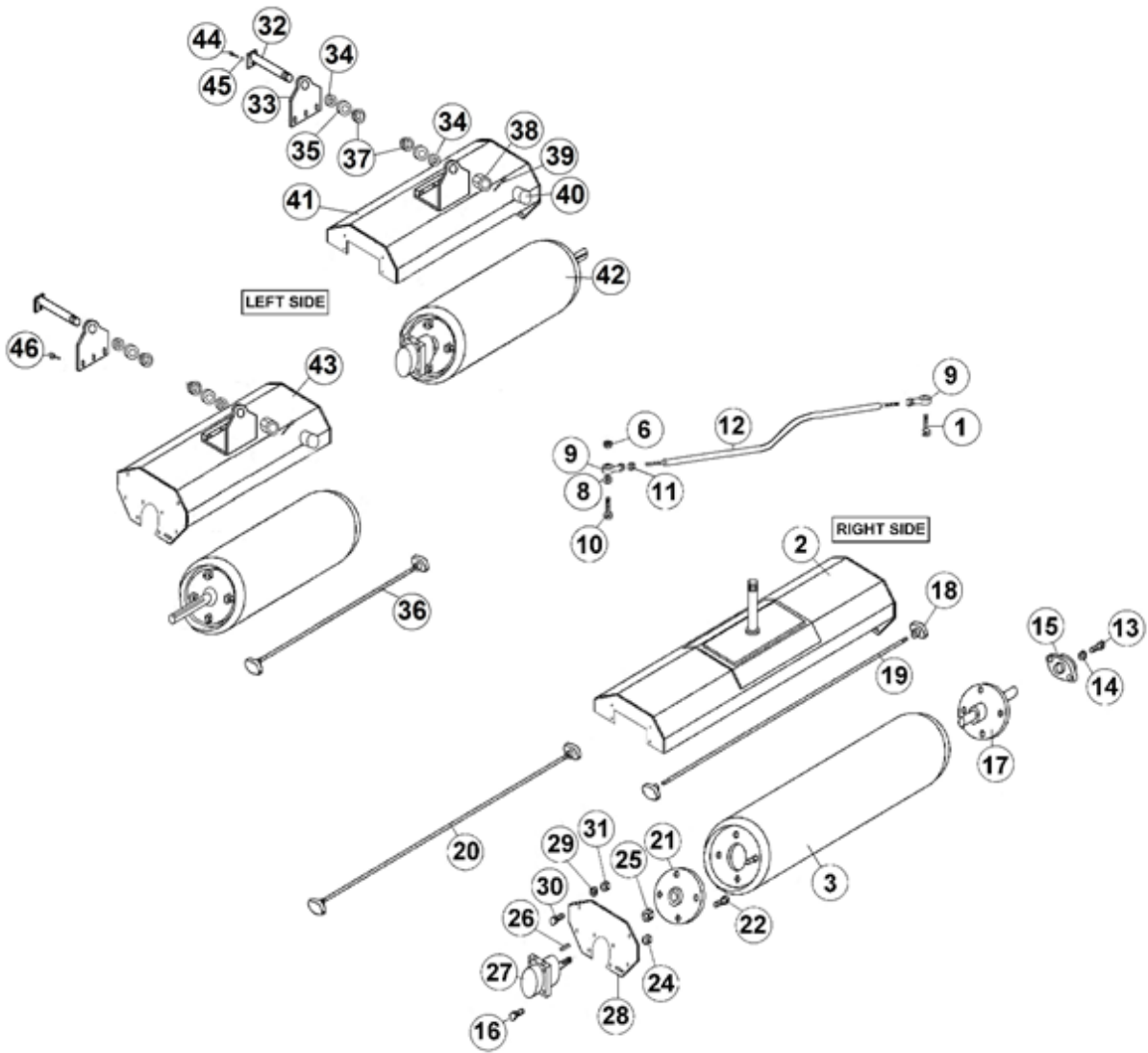
**7000 FRAME PARTS LIST**

<b>REF#</b>	<b>PART#</b>	<b>DESCRIPTION</b>	<b>QTY.</b>
1	832-123-2	Low-Back "Smithco" Seat Assy. w/ Slide Rail Kit	1
	832-123-1	Slide Rail Kit f/ Seat	
2	750-253-1	Seat Plate	1
3	750-278	Rubber Mat	1
4	750-241	Deck Plate	1
5	400-002	5/16" – 18 x 1" HHCS	10
6	750-254	Seat Plate Hinge	1
7	400-207	5/16" Lock Washer	10
8	400-102	5/16" – 18 Hex Nut	10
9	750-262	Engine Cover	1
10	41-143	Protective Bumper	2
11	750-290	Engine Cover Brace	1
12	750-891	Gas Shock Assembly w/Ball Stud	1
13	750-954	Oil Cap w/Dipstick	1
15	943-111	Oil Tank	1
16	750-402	Battery Box	1
17	943-110-4	Vent Valve	1
18	400-043	1/4" – 20 x 3/4" HHCS	10
19	943-110	Gas Tank	1
20	943-110-2	Gas Tank Valve	1
21	750-715	Throttle Cable 72"	1
22	750-570	Main Frame	1
23	750-977	Battery Hold Down Assembly	1
24	750-192	1 1/8" Poly Hex Nut & Bolt Cap	4
25	932-042	Thick Slotted Hex Nut 1 1/4" - 12	2
26	709-143-1	Cotter Pin 1/8" x 2 1/2"	2
27	932-024	Spacer	2
28	932-022	Seal	8
29	932-023	Bearing	8
30	943-126	Choke Cable	1
31	750-186	1/2" ID x 3/4" OD x 1/2" Spacer	2
32	400-112	1/2" – 13 Lock Nut 2-Way	1
33	750-166	Swivel Axle Bracket	1
34	943-127	Accelerator Pedal Pad	2
35	750-893	Left Foot Pedal	1
36	750-892	Right Foot Pedal	1
37	400-061-1	1/2" – 13 x 3 1/2" All Thread / Tap Bolt	2
38	10-007	Oilite Bushing 1/2" ID x 11/16" OD x 1"	4
39	750-571	Left Hand Crossmember	1
40	720-079	Cotter Pin 3/32 x 3/4"	4
41	720-078-1	5/16" x 1" Clevis Pin	4
42	11-101-1	Linkage Yoke	4
43	750-292	Oil Filler Breather	1
44	943-110-5	Vented Gas Tank Cap	1
45	843-172	Cover Lock	1

**7000 FRAME PARTS LIST (Continued)**

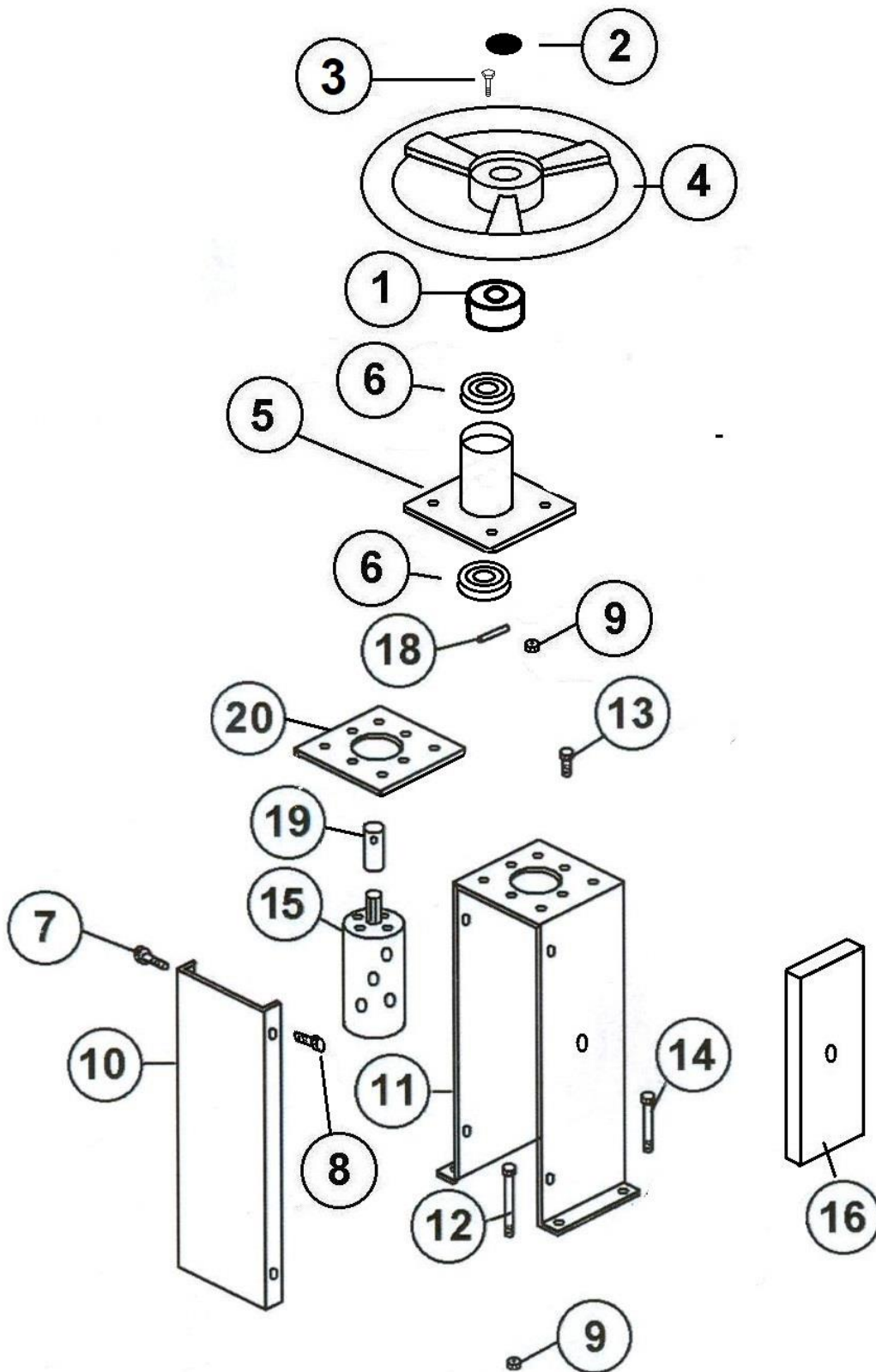
<b>REF#</b>	<b>PART#</b>	<b>DESCRIPTION</b>	<b>QTY.</b>
46	750-588	Power Steering Bracket	1
47	943-110-6	Fuel Gauge	1
49	750-005-1	Left Foot Rod Assembly w/ Yokes	1
50	750-004-1	Right Foot Rod Assembly w/ Yokes	1
51	750-591	Right Foot Guard (CE Only)	1
52	750-592	Left Foot Guard (CE Only)	1

# 7000 ROLLER HOUSING DRAWING



## 7000 ROLLER HOUSING PARTS LIST

REF#	PART#	DESCRIPTION	QTY.
1	400-099	½" x 1 3/4" Bolt	1
2	750-826	Right Roller Housing	1
3	750-821	Roller Cylinder	1
6	400-360	½" -13 Lock Nut	2
8	400-286	½" – 13 Hex Jam Nut	2
9	713-806	Ball Joint	2
10	400-028	½" – 13 X 2" HHCS	1
11	400-334	½" Flanged Lock Nut	2
12	750-578	Tie Rod	1
13	400-090	3/8" – 16 x 1 ¼" HHCS	6
14	400-116	3/8" – 16 Lock Nut	18
15	720-004	Flange Bearing	3
16	400-346	3/8" – 16 x 1" Flange Bolt	12
17	750-220-2	Hub w/Plate, Bushing & Shaft	2
18	750-210-2	Scraper Knob	6
19	750-210-1	Scraper Cable	1
20	750-210	Scraper Assembly w/Knobs	1
21	750-802	4 Bolt Hub	3
22	1188	Lug Bolt 7/16" FT x 1 ½"	8
24	400-119	7/16" Lock Nut	12
25	750-801-3	Castle Nut	2
26	740-023	3/16" x ¾" Woodruff Key	3
27	750-801	Wheel Motor	3
28	750-827	Bolted End Plate f/Housing	3
29	400-202	5/16" Flat Washer	12
30	400-014	3/8" – 16 x 1" HHCS	15
31	400-116	3/8" – 16 Lock Nut	10
32	750-572	Spindle Shaft	2
33	750-573	Flat Hanger Bracket	2
34	932-024	Spacer	6
35	932-022	Seal	4
36	750-577	Scraper Assembly w/Knobs	2
37	932-023	Bearing	4
38	932-042	Thick Slotted Hex Nut 1 ¼" – 12	4
39	709-143-1	Cotter Pin 1/8" x 2 ½"	2
40	750-192	1 1/8" Poly Hex Nut & Bolt Cap	2
41	750-574	Roller Housing Left – Front	1
42	750-557	Roller Cylinder	2
43	750-576	Roller Housing Left – Rear	1
44	400-014	3/8" – 16 x 1" HHCS	2
45	400-209	3/8" Lock Washer	2
46	400-345	½" – 13 x 1 ¼" Hex Head Bolt	6

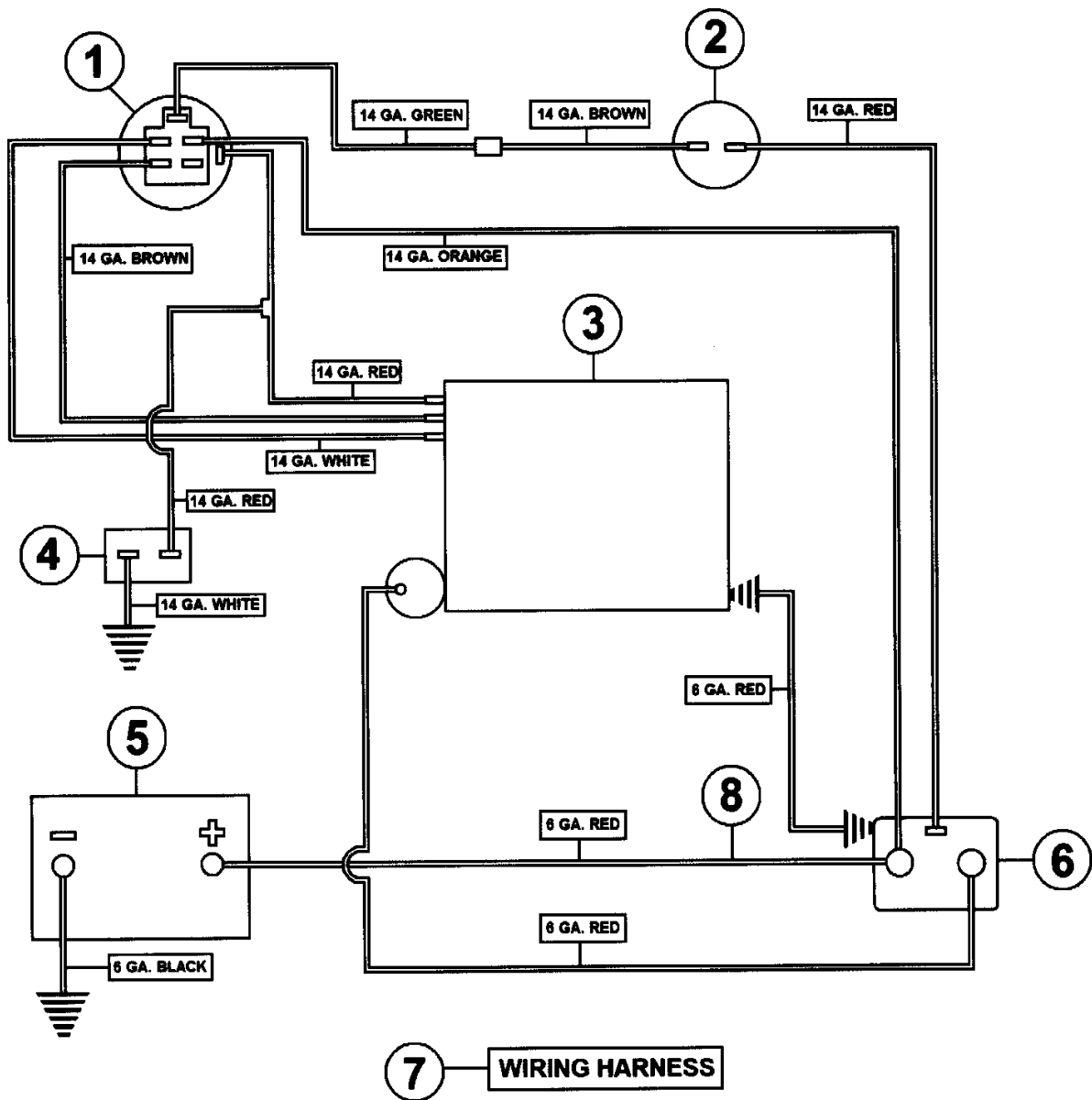




## 7000 STEERING PARTS LIST

REF#	PART#	DESCRIPTION	QTY.
1	750-991	Steering Wheel Adapter	1
2	750-994	Plastic Plug	1
3	400-351	1/4" x 3/4" Flange Bolt	3
4	750-990	Steering Wheel	1
5	750-992	Steering Column	1
6	851-046	Steering Post Bearing	2
7	400-351	1/4" x 3/4" Flange Bolt	3
8	400-352	1/4" x 1/2" Flange Bolt	1
9	400-281	5/16" Flanged Lock Nut	8
10	750-107	Steering Column Cover	1
11	750-106	Steering Column	1
12	400-339	5/16" x 7" Grade 8 Bolt	2
13	400-337	#6 Bolt	4
14	400-010	5/16" - 18 x 5" HHCS	2
15	750-804	Orbital	1
16	750-185-1	Weight Plate	1
18	750-315	Roll Pin	1
19	750-993	Spline Shaft f/ Steering Wheel	1
20	750-845	Orbital Steering Plate	1

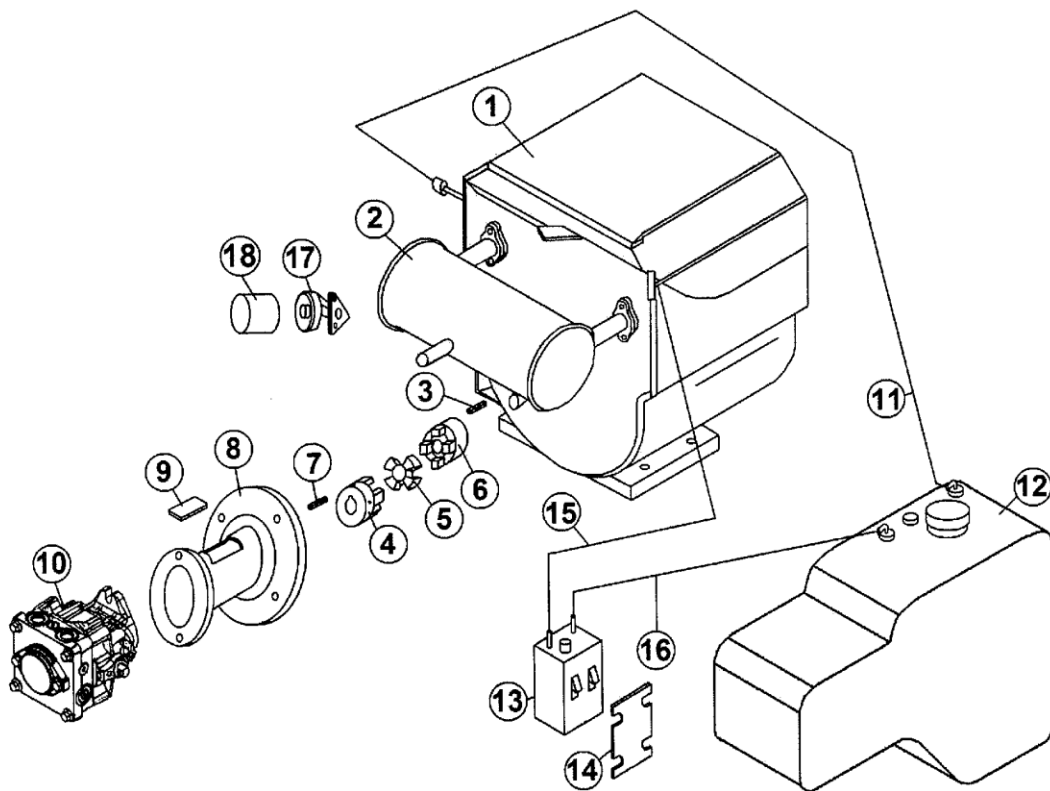
## 7000 WIRING DRAWING



## WIRING PARTS LIST

REF#	PART#	DESCRIPTION	QTY.
1	932-071	Key Switch	1
2	932-119-1	Safety Seat Switch	1
3	943-100	16 HP Vanguard Twin Engine	1
4	44-873	Hour Meter	1
5		Battery	
6	932-072	Solenoid	1
7	750-589	Wiring Harness	1
8	750-401	Battery Wire 6GA (+) Red 33"	1

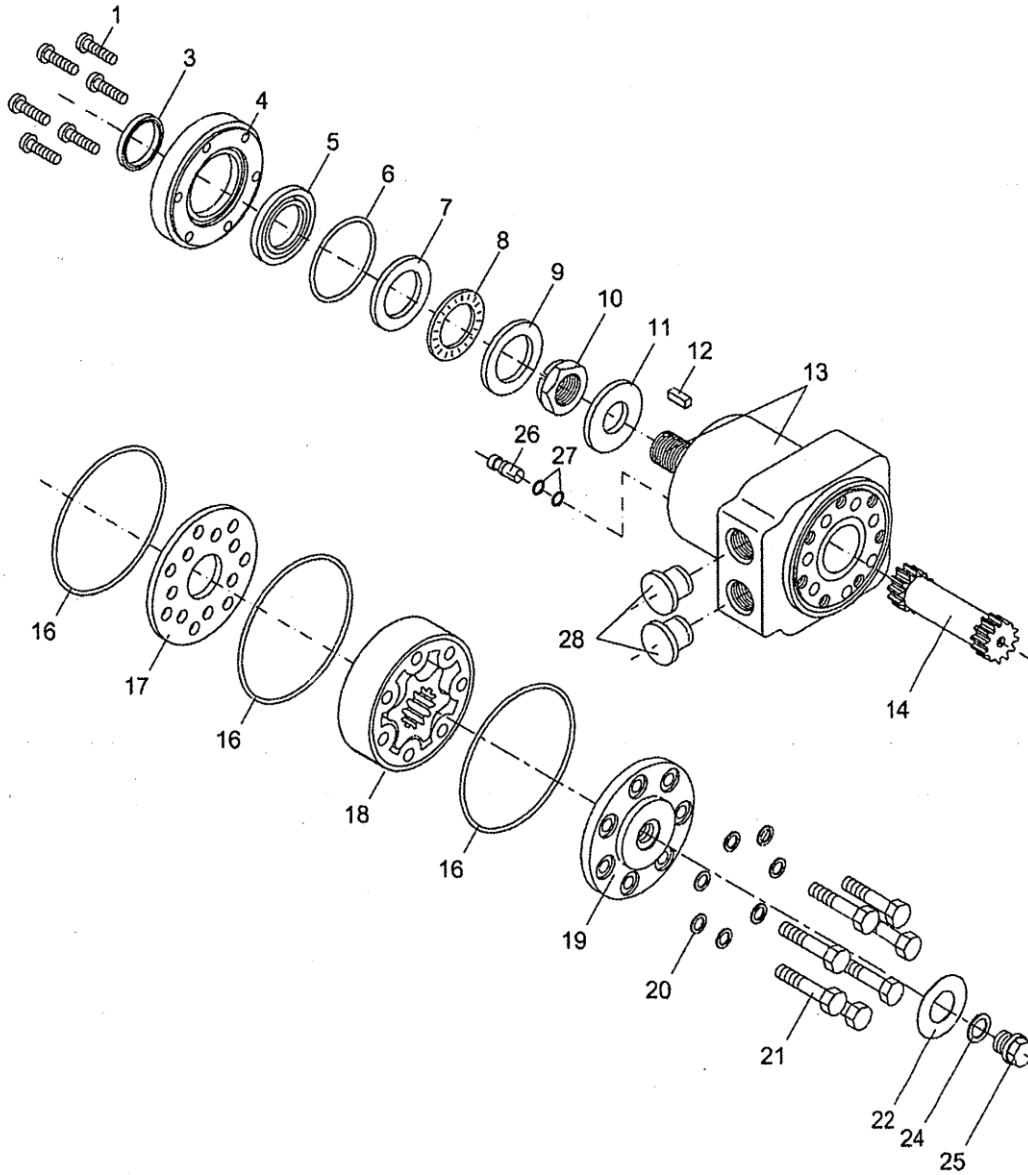
## 7000 ENGINE DRAWING



## 7000 ENGINE PARTS LIST

REF#	PART#	DESCRIPTION	QTY.
1	943-100	16 HP Engine (Model# 305447 Type 0600-G1)	1
2	943-115	Muffler	1
3	1517	¼" x 1" Key	1
4	750-851	Pump Hub 17mm w/#5 Key	1
5	720-027	Element	1
6	41-147	Engine Coupling 1"	1
7	750-201	#5 x 1" Key	1
8	750-255	5 ½ Bell Housing	1
9	750-127-1	Bell Housing Cover	1
10	750-846	16cc w/Aux Charge Pump	1
11	638	¼" Gas Hose 35"	1
12	943-110	Gas Tank	1
13	943-241	Carbon Canister	1
14	943-240	Carbon Canister Mount	1
15	637	3/16" Gas Hose 40"	1
16	638	¼" Gas Hose 17"	1
17	943-159	Oil Filter Adapter	1
18	943-104	Engine Oil Filter	1

# 750-801 WHEEL MOTOR DRAWING



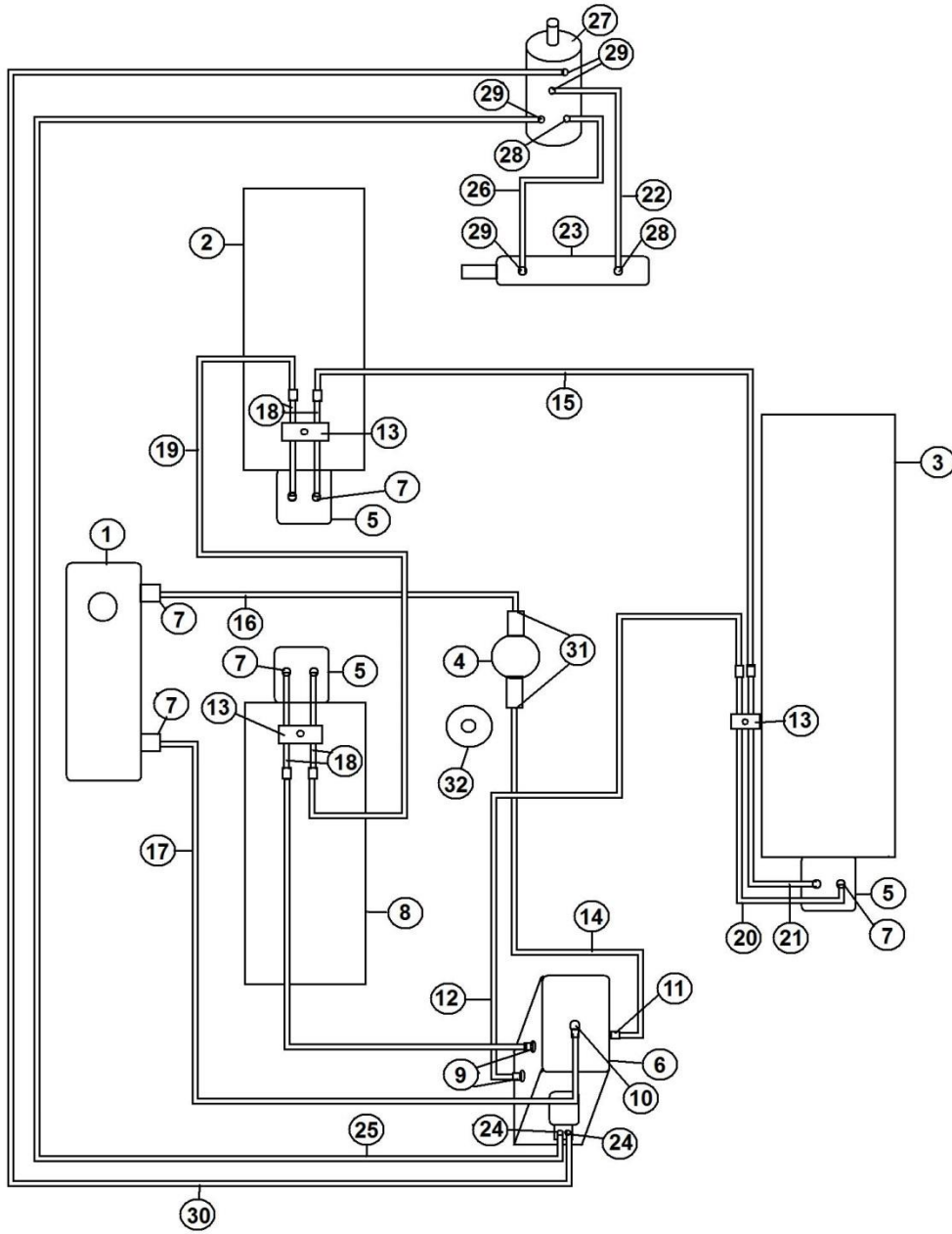
151-1379.10

## 750-801 WHEEL MOTOR PARTS LIST

REF#	PART#	DESCRIPTION	QTY.
1	750-801-6	Screw	6
3	750-801-5	Dust Seal Ring	1
4	750-801-7	Spigot Flange	1
5	750-801-5	Shaft Seal	1
6	750-801-5	O-Ring	1
7	750-801-8	Bearing Race	1
8	750-801-9	Axle Needle Bearing	1
9	750-801-10	Bearing Race	1
10	750-801-3	Castellated Nut	1
11	750-801-12	Washer	1
12	740-023	Woodruff Key, 3/16" x 3/4"	1
14	750-801-14	Cardan Shaft	1
16	750-801-5	O-Ring	3
17	750-801-15	Distributor Plate	1
18	750-801-16	Gear Wheel Set	1
19	750-801-17	End Cover	1
20	750-801-18	Washer	7
21	750-801-19	Screw	7
24	750-801-20	Washer	1
26	750-801-21	Check Valve	2

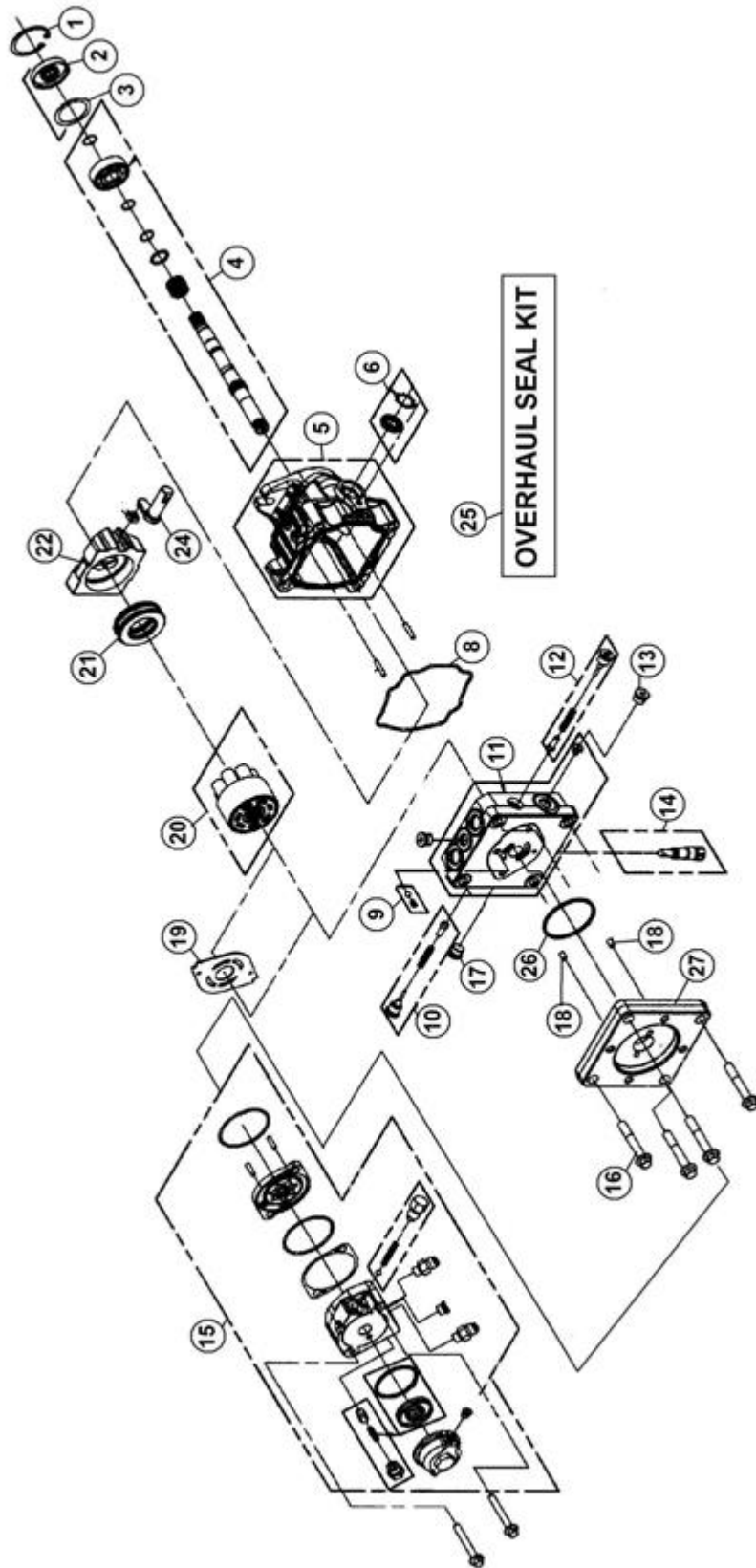
**Note: Reference #'s 3, 5, 6 & 16 are part of the 750-801-5 Seal Kit**

# HYDRAULIC PLUMBING DRAWING



## HYDRAULIC PLUMBING PARTS LIST

REF#	PART#	DESCRIPTION	QTY.
1	943-111	Oil Tank	1
2	750-574	Roller Housing Left Front	1
3	750-826	Right Roller Housing	1
4	750-302	Filter Head	1
5	750-801	Wheel Motor	3
6	750-846	16 cc w/Aux Charge Pump	1
7	750-326	8-10 Wheel Motor & Tank Fitting Str.	8
8	750-576	Roller Housing Left Rear	1
9	750-322	Pump Fitting 45°	2
10	750-324	8 – 6 90° Pump Fitting Top	1
11	750-848	8 – 8 Side Pump Fitting Str	1
12	750-511	Hydraulic Hose 62" w/Straight Both Ends	1
13	750-502	Hard Line Clamp	3
14	750-310	½" Hose – 24 ¼" Filter Head – Pump	1
15	750-562	½" Hose – 66" St - 45°	1
16	750-306	½" Hose – 7 ¼" Tank – Filter Head	1
17	750-305	½" Hose – 11" Oil Tank – Pump	1
18	750-561	Short Hard Line 8" w/90°	4
19	750-563	½" Hose – 78" St – St.	1
20	750-506	Hard Line Long Right Side	1
21	750-507	Hard Line Short Right Side	1
22	750-833	Hydraulic Hose 36"	1
23	943-504	Hydraulic Cylinder	1
24	750-834	Hydraulic Fitting ¼" 45°	2
25	750-835	Hydraulic Hose 65"	1
26	750-836	Hydraulic Hose 33 ½"	1
27	750-804	Orbital	1
28	750-837	Hydraulic Fitting 90° Flare	2
29	750-838	Hydraulic Fitting Str. Flare	4
30	750-835	Hydraulic Hose 65"	1
31	750-325	8 – 12 Oil Filter Head Fitting Str.	2
32	750-300	Hydraulic Oil Filter	1
NI	932-121	5/8" Fine Thread Ball Joint (On Hydraulic Cylinder)	1
NI	932-122	5/8" Jam Nut Fine Thread (On Hydraulic Cylinder)	1
NI	400-070	5/8" -11 x 2" HHCS (On Hydraulic Cylinder)	2
NI	400-331	5/8" Course Thread Stover Nut (On Hyd. Cylinder)	2

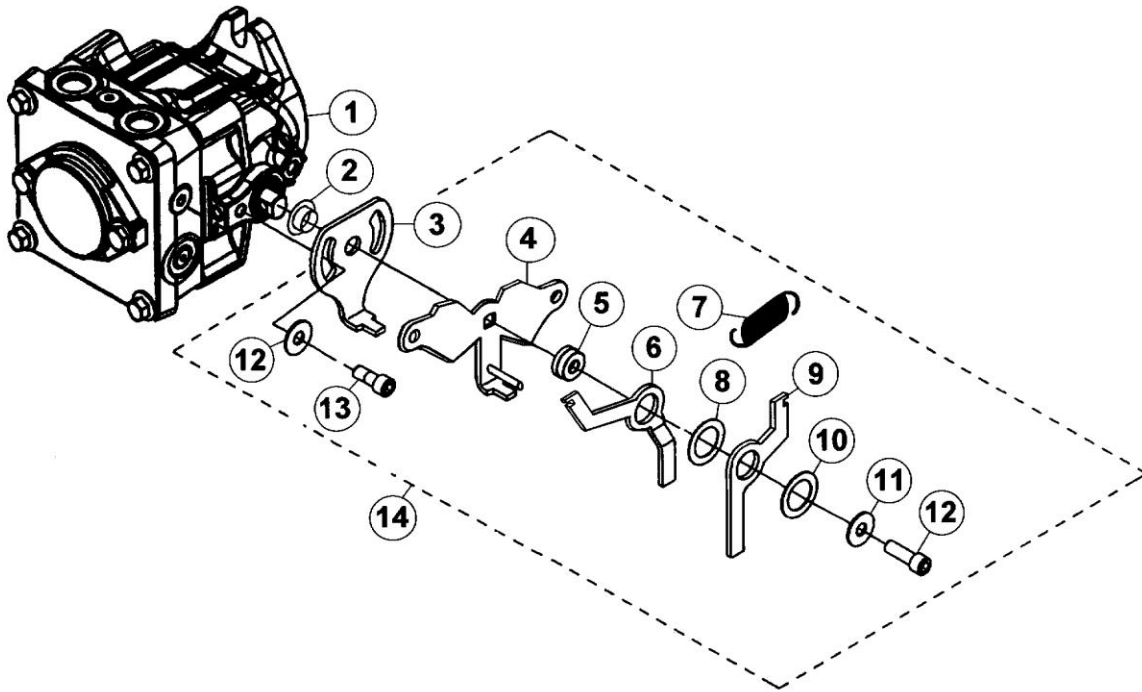




## 750-846 PUMP PARTS LIST

REF#	PART#	DESCRIPTION	QTY.
1	750-847-3	Retaining Ring	1
2	750-847-4	Lip Seal	1
3	750-847-5	Spacer	1
4	750-847-6	Shaft Kit	1
5	750-847-7	Bare Housing	1
6	750-847-8	Trunnion Seal Kit	1
8	750-847-9	O-Ring	1
9	750-847-10	Charge Relief	1
10	750-847-11	Shock Valve Kit	1
11	750-847-12	End Cap	1
12	750-847-11	Shock Valve Kit	1
13	750-847-13	Plug	1
14	750-228-7	Bypass Valve	1
15	750-846-1	Charge Pump	1
16	750-846-2	Screw	4
17	750-847-13	Plug	1
18	750-846-3	Screw	2
19	750-847-17	Valve Plate	1
20	750-847-18	Cylinder Block	1
21	750-847-19	Thrust Bearing	1
22	750-847-20	Swash Plate	1
24	750-847-21	Trunnion Arm	1
25	750-849	Seal Kit f/16 CC Pumps	1
26	750-846-4	O-Ring	1
27	750-846-5	Plate	1

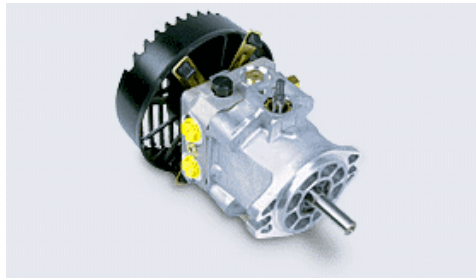
## PUMP LINKAGE DRAWING



## PUMP LINKAGE PARTS LIST

REF.#	PART#	DESCRIPTION	QTY.
1	750-846	16cc w/Aux Charge Pump	1
2	750-228-30	Bushing	1
3	750-343-1	Shift Lever Top (New)	1
4	750-344-1	Shift Lever Bottom (Sq. Hole .470) w/Bolt	1
4	750-344	Shift Lever Bottom (Sq. Hole .350) w/Bolt	1
5	750-228-31	Bushing	1
6	750-345	Shift lever Right - Bent	1
7	750-229-1	Gold Spring	1
8	750-228-32	Nylon Washer	1
9	750-346	Shift Lever Left - Straight	1
10	750-228-33	Flange	1
11	750-228-34	5/16" Flat Washer	2
12	750-228-35	Washer	1
13	750-228-36	Allen Head Bolt	1
14	750-228-37	Pump Bracket Kit	1

# PERFORMANCE CHART



Product Type		PC	PG	PJ	PR	PW
<b>Displacement</b>	in <sup>3</sup> /rev [cc/rev]	0.37 [6.1]	0.62 [10.2]	0.73 [12]	0.97 [16]	1.33 [21.8]
<b>Input Speed</b>						
Maximum Unloaded	rpm	3600	3600	3600	3600	3600
Minimum Loaded	rpm	1800	1800	1800	1800	1800
<b>System Operating Pressure</b>						
Continuous	psi [bar]	750 [51]	1000 [70]	1000 [70]	1250 [86]	1250 [86]
Intermittent	psi [bar]	1750 [120]	2100 [145]	2100 [145]	2500 [172]	2500 [172]
Peak	psi [bar]	2500 [172]	3500 [240]	3500 [240]	3750 [260]	3750 [260]
<b>Pump Performance</b>						
@ 2400 rpm/1000 psi	gpm [l/min]	3.6 [13.6]	6.1 [23.1]	7.1 [26.8]	9.6 [36.3]	13.1 [49.6]
@ 3000 rpm/1000 psi	gpm [l/min]	4.5 [17.0]	7.6 [28.8]	8.9 [33.6]	12 [45.4]	16.4 [62.1]
@ 3600 rpm/1000 psi	gpm [l/min]	5.4 [20.4]	9.2 [34.8]	10.8 [40.8]	14.4 [54.5]	19.6 [74.2]
<b>Case Pressure</b>						
Maximum @ Cold Start	psi [bar]	10 [0.7]	10 [0.7]	10 [0.7]	25 [1.7]	25 [1.7]
Continuous - Max.	psi [bar]	4 [0.3]	4 [0.3]	4 [0.3]	10 [0.7]	10 [0.7]
<b>Inlet Vacuum</b>						
Maximum Continuous Inches Mercury		4	4	4	4	4
<b>Charge Pump Displacement(s)</b>	in <sup>3</sup> /rev [cc/rev]	.13 [2.1]	0.11/0.13 [1.9/2.1]	0.19 [3.2]	0.13/0.19 [2.1/3.2]	0.13/0.19 [2.1/3.2]
<b>Auxiliary Pump Displacement</b>	in <sup>3</sup> /rev [cc/rev]	0.19 [3.2]	0.19 [3.2]	0.19 [3.2]	0.19 [3.2]	0.19 [3.2]
<b>Auxiliary Pump Relief Setting</b>	psi [bar]	650 [45]	650 [45]	650 [45]	650 [45]	650 [45]
<b>Auxiliary Pump Performance</b> @3200 rpm, 500 psi, 70 SUS [13 Cst] oil, & 180°F	gpm [l/min]	1.8 - 2.0 [6.8 - 7.6]	1.8 - 2.0 [6.8 - 7.6]	1.8 - 2.0 [6.8 - 7.6]	1.8 - 2.0 [6.8 - 7.6]	1.8 - 2.0 [6.8 - 7.6]
<b>Control Torque Required to Stroke Pump</b> [Approximate - 20° External Stroke Angle]		75	85	85	95	105

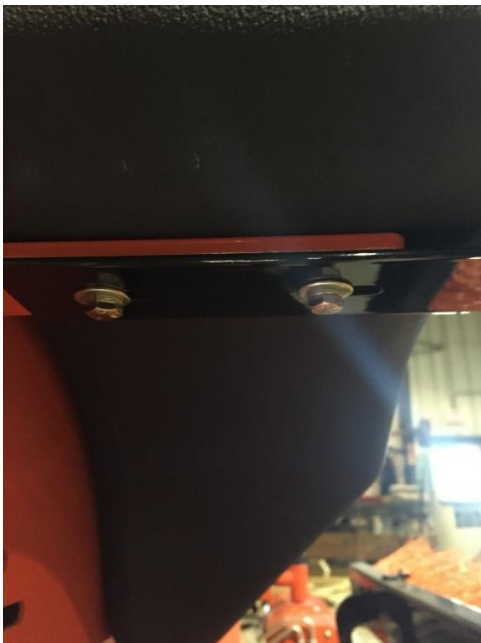
	lb-in / 1000 psi [N-m / 70 bar]	[8.5] 55	[9.6] 60	[9.6] 60	[10.7] 75	[11.9] 85
	lb-in / 500 psi [N-m / 35 bar]	[6.2]	[6.8]	[6.8]	[8.5]	[9.6]
<b>Pump Oil Temperature</b>						
Maximum Intermittent (hottest point)	°F [°C]	230 [110]	230 [110]	230 [110]	230 [110]	230 [110]
Normal Operating Range	°F [°C]	-10 to 200 [-23 to 93]	-10 to 200 [-23 to 93]	-10 to 200 [-23 to 93]	-10 to 200 [-23 to 93]	-10 to 200 [-23 to 93]
<b>Fluid Viscosity Limits @ 230°F [110°C]</b>						
Optimum	SUS[cSt]	70 [13]	70 [13]	70 [13]	70 [13]	70 [13]
Minimum	SUS[cSt]	55 [9]	55 [9]	55 [9]	55 [9]	55 [9]
<b>Weight of Unit</b>						
	lbs [kg]	7 [3.2]	8 [3.6]	12.65 [5.7]	12 [5.4]	14 [6.3]
<b>Inlet Filtration Requirement</b>						
Nominal	micron	25	25	25	25	25

## 750-450 LIGHT KIT PARTS LIST (Optional Accessory)

PART#	DESCRIPTION	QTY.
750-451	Wiring Harness	1
750-341-4	Switch Tab	1
750-341-3	Light Brackets	2
750-452	Light Bulb w/Connector	2
2070	Ignition Switch (Included in wiring harness)	1
709-255-1	Boot (Included in wiring harness)	1
	Zip Ties	4

## LIGHT KIT INSTALLATION

1. Bolt the light brackets under the gas and oil tanks. (As shown below)



2. Bolt the lights to the light brackets. Bolt the switch tab under the light over the battery side for the toggle switch.

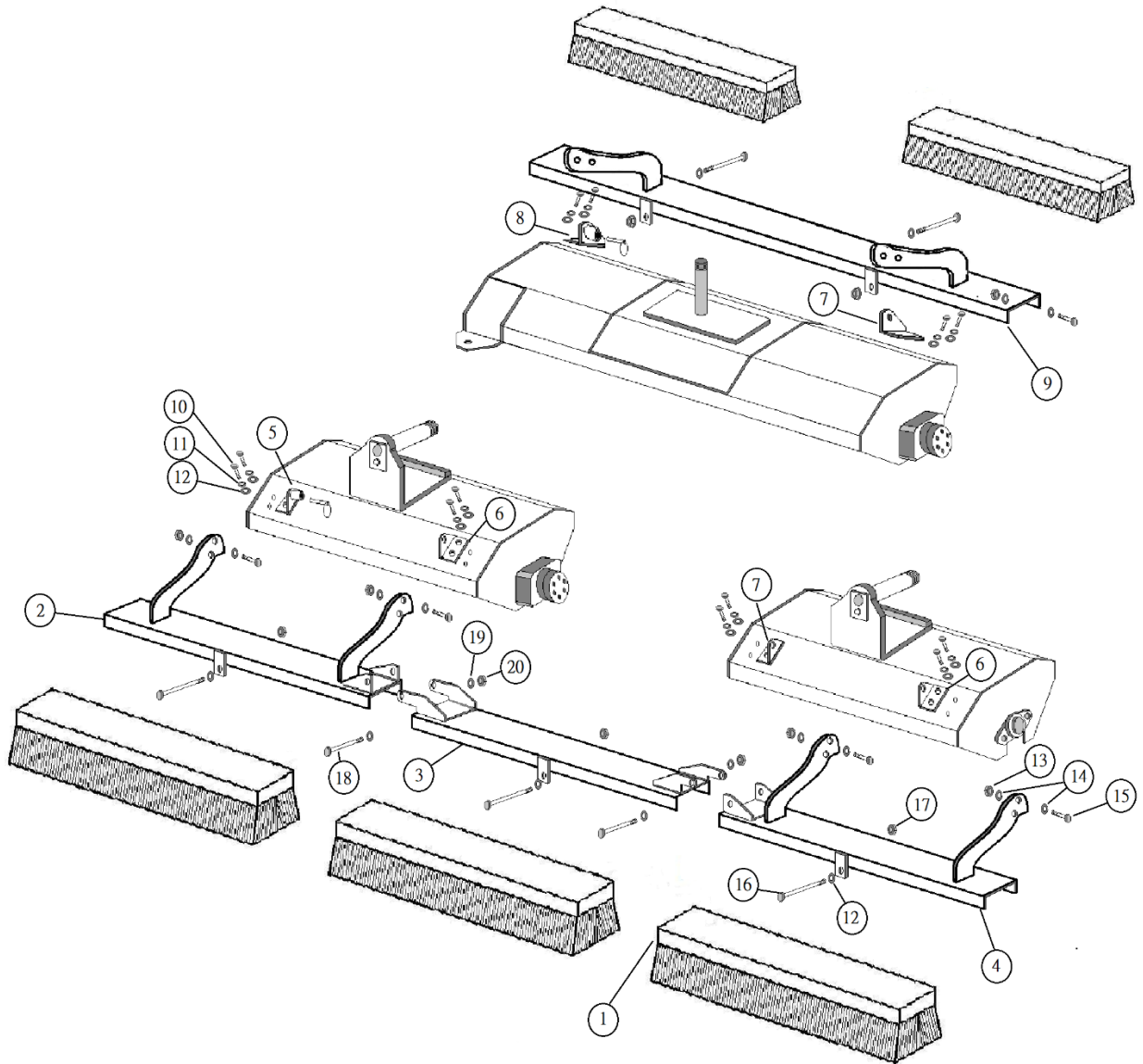


3. Connect wiring to the lights. Wiring can run in back of the machine at the top. Zip tie the wiring to the bar at the back of the machine. Put the toggle switch in the switch tab.



4. Fasten the fuse to the positive on the battery and black to the negative on the battery.

# 7516 BRUSH KIT DRAWING (Optional Accessory)



## **7516 BRUSH KIT PARTS LIST (Optional Accessory)**

<b>REF #</b>	<b>PART#</b>	<b>DESCRIPTION</b>	<b>QTY.</b>
1	750-410	Roller Brush	5
2	750-985	Left Front Brush Mount	1
3	750-986	Left Center Brush Mount	1
4	750-987	Left Rear Brush Mount	1
5	750-902	Left Brush Bracket Mount w/Pin	1
6	750-901	Left Brush Bracket Mount	2
7	750-857	Right Brush Bracket Mount	2
8	750-855	Right Brush Bracket Mount w/Pin	1
9	750-856	Right Brush Bracket	1
10	400-002	5/16" – 18 x 1" HHCS	12
11	400-207	5/16" Lock Washer	12
12	400-201	1/4" Flat Washer	32
13	400-112	1/2" – 13 Lock Nut 2-Way	6
14	40-128-1	1/2" ID x 7/8" OD x 14Ga Machine Bushing	18
15	400-027	1/2" – 13 x 1 1/2" HHCS	6
16	400-010	5/16" – 18 x 5" HHCS	5
17	400-281	5/16" Flanged Lock Nut	13
18	400-022	3/8" – 16 x 4 1/2" HHCS	2
19	400-202	5/16" Flat Washer	4
20	400-116	3/8" – 16 Lock Nut Gold	2
NI	400-343	5/16" x 1" Lag Screw	15
NI	750-441	Ramp Latch	2

## **7516 BRUSH KIT INSTALTION INSTRUCTIONS**

Items you will need.

1. TAPE MEASURE
2. DRILL
3. 5/16" X 18 TAP (OPTIONAL)
4. DRILL BIT (13/64) FOR TAPPING OR (21/64) IF NOT ABLE TO TAP
5. SPEED SQUARE
6. CENTER PUNCH
7. A WAY TO MARK THE HOLES



## STEP 1.

Measure the left front roller housing and mark your holes at  $1\frac{7}{8}$ " in from the bearing side and at  $2\frac{3}{4}$ " and  $3\frac{3}{4}$ " from the bottom of the housing.



## STEP 2.

Measure the left front roller housing and mark your holes at  $2\frac{1}{8}$ " in from the roller motor side and at  $2\frac{3}{4}$ " and  $3\frac{3}{4}$ " from the bottom of the housing. Your holes should be  $18\frac{1}{4}$ " apart.





**Step 3.**

On the left rear roller housing please repeat steps 1 and 2.

**Step 4.**

With a center punch mark your holes.

**Step 5.**

At this time you can either drill your holes to  $13/64$  if you choose to tap the holes to  $5/16$ " or if you would like to use the 8 extra  $5/16$ " flange nuts you can drill the holes to  $21/64$ ". This step is up to you on how you would like to do so.

**Step 6.**

Install the front and rear brush's to the roller housings using the (8)  $5/16$  x 1 bolts that are supplied in the kit. Make sure that the brush mount with the pin is mounted to the front housing.

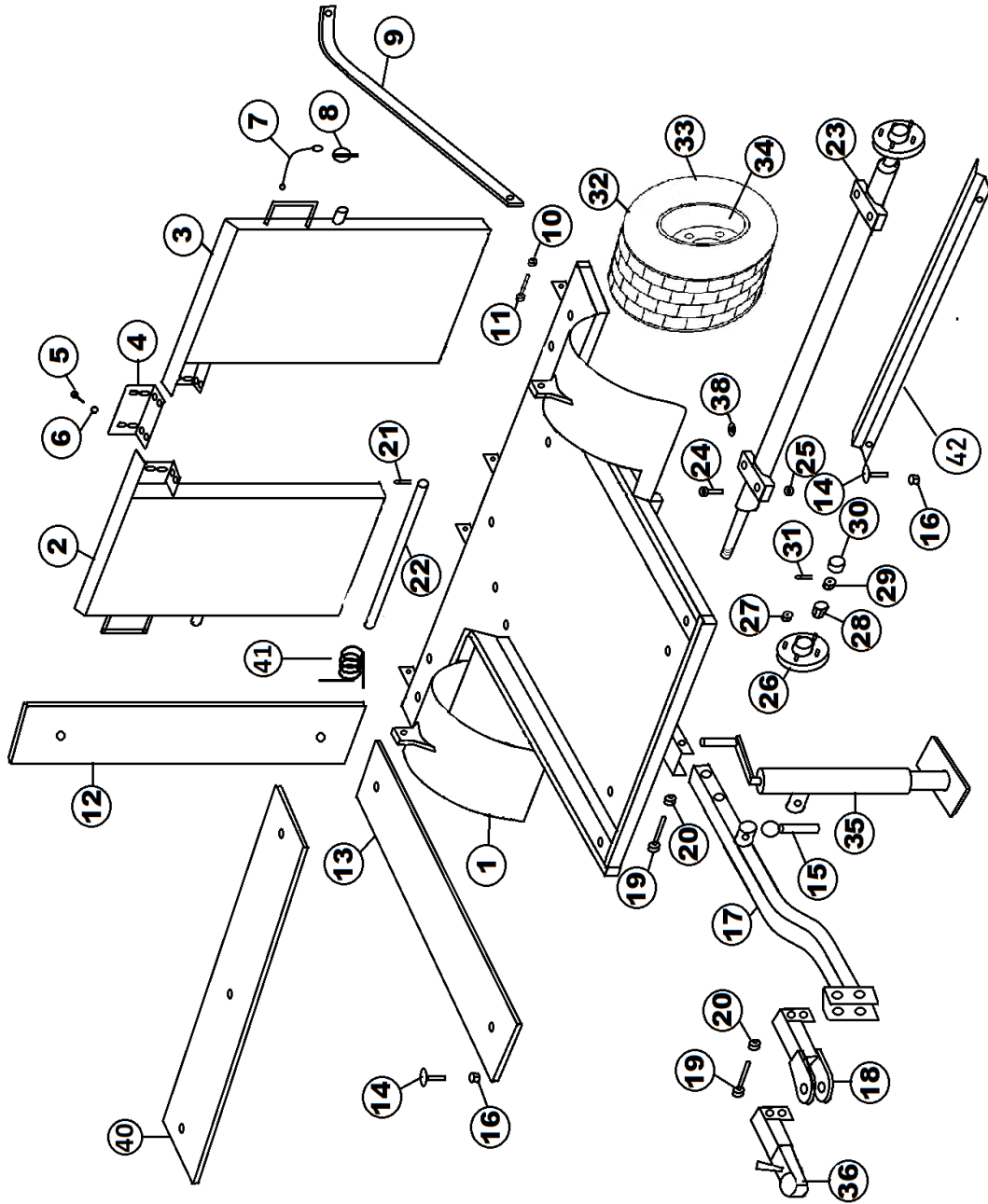
**Step 7.**

Install the center brush using the (2) 3/8" x 4 1/2 bolts and lock nuts. Make sure not to over tighten the bolts as it needs to be able to float in the middle of the front and rear brush.

**Step 8.**

Install the right side brush using the (4) 5/16" x 1 bolts and tighten.

# 7525 TRAILER DRAWING F/7000 ROLLER



## 7525 TRAILER PARTS LIST F/7000 ROLLER

REF#	PART#	DESCRIPTION	QTY.
1	750-430	Trailer Bed	1
2	750-432	Right Side Ramp	1
3	750-431	Left Side Ramp	1
4	750-433	Ramp Plate	1
5	400-321	1/4" X 3/4" X 20 Truss Head Bolt	8
6	400-342	1/4" Flanged Lock Nut	8
7	750-422	3/64 x 6 Lanyard	2
8	750-421	Snap Pin 3/16 x 1 1/4"	2
9	750-441-1	Ramp Latch – Straight	2
10	400-112	1/2" – 13 Lock Nut	2
11	400-027	1/2" – 13 x 1 1/2" HHCS	2
12	750-164-7	Rubber Matting f/7525 Ramp 55" x 7"	4
13	750-438-1	Rubber Matting f/Bed 40" x 7"	2
14	400-255	Elevator Bolt	15
15	750-961-1	Jackstand Pin & Chain	1
16	400-281	5/16" Flanged Lock Nut	12
17	750-434	Drawbar	1
18	750-435	Drawbar Hitch	1
19	400-061	1/2" – 13 x 3 1/2" HHCS	4
20	400-112	1/2" – 13 Lock Nut 2-way	4
21	40-168	Cotter Pin 1/8 x 1"	4
22	750-436	Ramp Pin	2
23	750-960	Axle	1
24	400-015	3/8" – 16 x 1 1/2" HHCS	4
25	400-116	3/8" – 16 Lock Nut	4
26	2027-1	Hub Only	2
27	1187	Lug Nut	8
28	2028-1	Tapered Bearing	4
29	709-126	Spindle Nut	2
30	2024	Grease Cap	2
31	720-043	Cotter Pin 1/8" x 1 1/2"	2
32	750-967	Wheel & Tire 18 x 850 – 8 6ply	2
33	750-967-1	Tire 18 x 850 – 8 6ply	2
34	2026	Cargo Wheel	2
35	750-961	Jackstand	1
36	750-435-1	Ball Hitch	1
38	400-202	5/16" Flat Washer	10
40	750-164-8	Rubber Matting f/Bed 63" x 7"	1
41	750-444	Torsion Spring	8
42	750-406-1	Roller Stop	1
*	400-207	5/16" Lock Washer	
*	400-102	5/16" – 18 Hex Nut	

\*Part of bolt bag

## TRAILER SPRING PLACEMENT



# The Smithco Commercial Products Two-Year Limited Warranty

Smithco, Inc. (Smithco) warrants your 2016 or newer Smithco Commercial Product (“Product”) purchased after October 1, 2016 to be free from defects in materials or workmanship for the period of time listed below. Where a warrantable condition exists, Smithco will repair the Product at no cost to you including diagnosis, labor (at the Smithco standard labor rate, subject to the Smithco flat rate schedule), and parts.

## Warranty Duration Is:

1. **Two years, 1500 operational hours\* from the date of delivery to the original purchaser or five years from the date of original manufacturer of the product, whichever occurs first. (\*Products equipped with hour meter).**
2. **Products used in rental situations are covered for 90 days from date of delivery to original user/renter.**

## Owner responsibilities:

As the Product owner, you are responsible for required maintenance and adjustments stated in your Owner’s Manual. Failure to perform required maintenance and adjustments can be grounds for disallowing a warranty claim. **You are particularly responsible to train all present and future operators of this product on the safe operation of this product at your location.**

## Instructions for Obtaining Warranty Service:

You are responsible for notifying the Authorized Smithco Products Distributor from whom you purchased the Product as soon as you believe a warrantable condition exists and not later than 30 days from discovery of the condition.

If you need help locating an Authorized Smithco Distributor, or if you have questions regarding your warranty rights or responsibilities, you may contact us at:

Smithco Product Support Department  
Highway SS @ Poplar St.  
Cameron, Wisconsin 54822  
Telephone: 715-458-4192      E-Mail: [ProductSupport@Smithco.com](mailto:ProductSupport@Smithco.com)

## Maintenance Parts:

Parts scheduled for replacement as required maintenance (“Maintenance Parts”), are warranted for the period of time up to the scheduled replacement time for that part.

## Items/Conditions Not Covered:

Not all product failures or malfunctions that occur during the warranty period are defects in materials or workmanship. The items/conditions listed below are not covered by this warranty.



Product failures which result from the use of non-Smithco replacement parts, or from installation and use of add-on, modified, or unapproved accessories are not covered.



Product failures which result from failure to perform required maintenance and/or adjustments are not covered.



Product failures that result from operating the Product in an abusive, negligent or reckless manner are not covered.



This warranty does not apply to parts subject to consumption through use, unless found to be defective. Examples of parts which are consumed, or used up during normal Product operation include, but are not limited to: blades, tines, teeth, scarifiers, rakes, plates, wear plates, castor wheels, tires, batteries, filters, belts, nozzles, etc.



This warranty does not apply to failures caused by outside influence. Items considered to be outside influence include, but are not limited to, weather, storage practices, contamination, use of unapproved coolants, lubricants, additives, or chemicals, etc.



This warranty does not apply to normal “wear and tear” items. Normal “Wear and Tear” includes, but is not limited to, damage to seats due to wear or abrasion, worn painted surfaces, scratched decals or windows, etc.



Smithco may require the return of failed parts or components in order determine the validity of any warranty claim.



Smithco will not be obligated to replace components of other manufacturers if inspection by the original component manufacturer indicates that failure was due to normal wear and tear, expected consumption through use or improper care or service.

#### **Other Legal Disclaimers:**

The above remedy for product defects through repair or replacement by an authorized Smithco distributor or dealer is the purchaser’s sole remedy for any defect. This warranty gives you specific legal rights, and you may also have other rights which vary from state to state.

**THERE ARE NO OTHER EXPRESS WARRANTIES OTHER THAN THOSE SET FORTH ABOVE. ALL IMPLIED WARRANTIES OF MERCHANTABILITY AND FITNESS FOR USE ARE LIMITED TO THE DURATION OF THE LIMITED WARRANTIES CONTAINED HEREIN.**

Some States may not allow limitations on how long an implied warranty lasts, so the above limitation may not apply to you.

**THE SMITHCO COMPANY IS NOT LIABLE FOR INDIRECT, INCIDENTAL OR CONSEQUENTIAL DAMAGES IN CONNECTION WITH THE USE OF THE PRODUCT, INCLUDING ANY COST OR EXPENSE OF PROVIDING A SUBSTITUTE PRODUCT OR SERVICE DURING PERIODS OF MALFUNCTION OR NON-USE.**

Some states may not allow the exclusion of indirect, incidental or consequential damages, so the above exclusion may not apply to you.

**Smithco neither assumes, nor authorizes any person to assume for it, any other liability in connection with the sale or use of this product.**

**SMITHCO, INC.  
WANYE, PA 19087**



